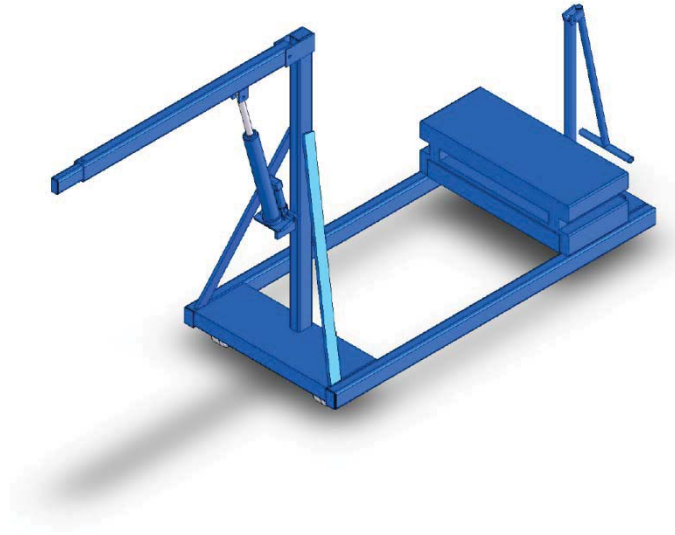




David Round & Son, Inc.
Ruger Division
10200 Wellman Rd
Streetsboro, OH 44241
Phone: 330-656-1600
Fax: 330-656-1601
info@davidround.com
www.rugerindustries.com

Ruger® RC750R



RC750R

- 750 lb. Capacity
- Reversed based allows for easier access to loads

OPTIONAL ACCESSORIES

- Floor Lock - Direct Bolt-On
- Polyurethane Wheels - Direct Bolt-On
- Phenolic Wheels - Direct Bolt-On
- Manual Hand Winch - Rated for Lifting Design

Meets ASME PALD standards
for shop cranes.
Conforms to ANSI Z535 standards.

Standard Features

- Meets Ruger's structural engineering standards for 150% of rated lifting capacity
- Straddle leg designed units are built to exceed 125% stability factor
- Self contained hydraulic bottle jack
- Needle type release valve permits pin-point control over lowering and holding of the heaviest or lightest loads
- Phenolic wheels with sleeve bearings
- Steel construction & primer coated

Prices, specifications, and options are subject to change without notice. All Ruger products are shipped F.O.B. Streetsboro, OH 44241

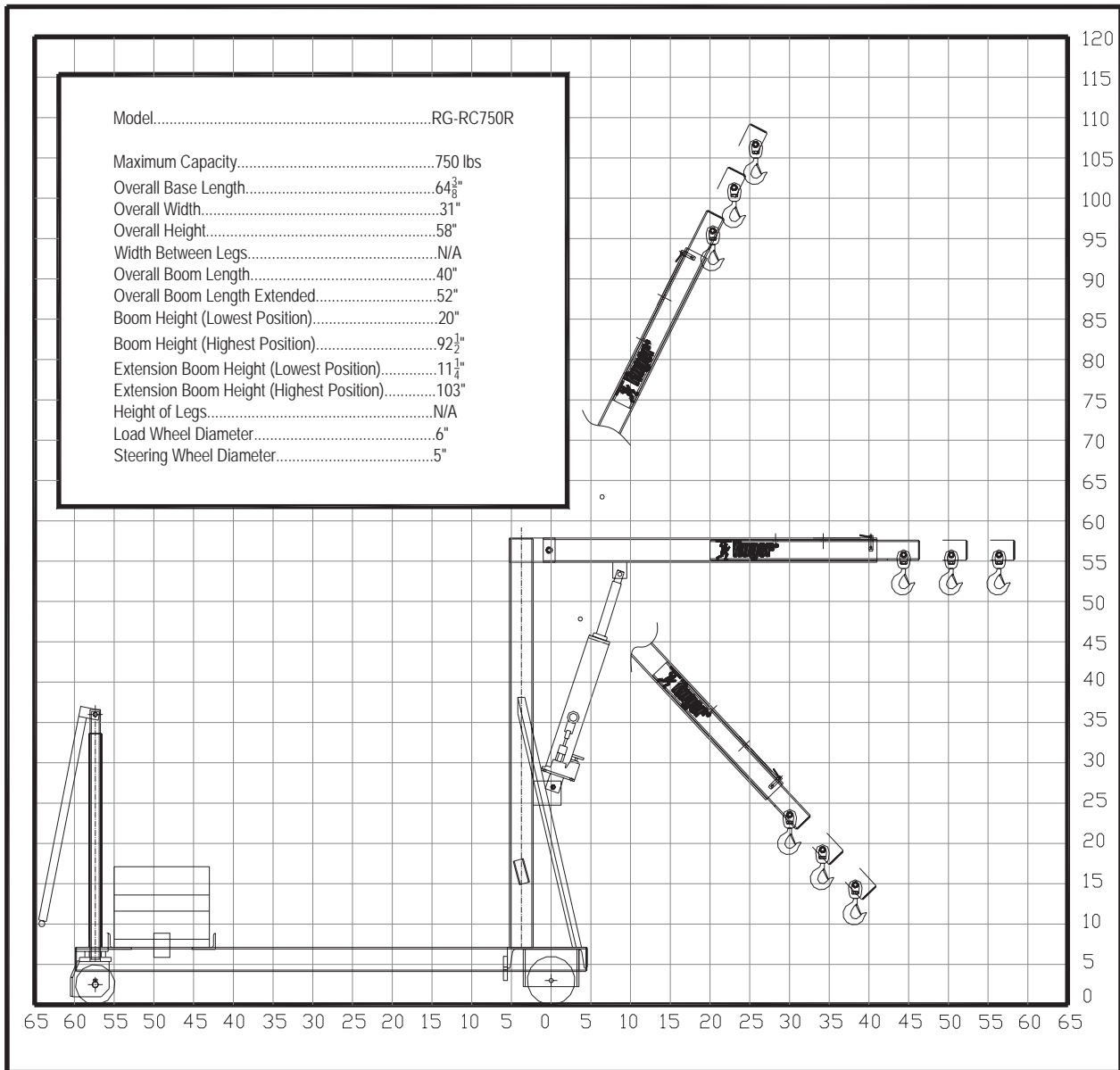


David Round & Son, Inc.
 Ruger Division
 10200 Wellman Rd
 Streetsboro, OH 44241
 Phone: 330-656-1600
 Fax: 330-656-1601
 info@davidround.com
 www.rugerindustries.com

MODEL: RC750R

Load Capacity 750 lbs

Figure 1



Designers & Manufacturers of Hydraulic Load Lifting and Material Handling Equipment