



David Round, Inc.
Ruger Division
10200 Wellman Road
Streetsboro, OH 44241
Phone: 330-656-1600
Fax: 330-656-1601
www.rugerindustries.com

VERSATILE

POWERFUL

DEPENDABLE

RELIABLE

HP-3

- **6000 lb. Capacity**
- **Built to handle the toughest jobs**

ACCESSORIES

- **Floor Lock**
- **Extension Boom**
- **Power-Pak**

STANDARD FEATURES

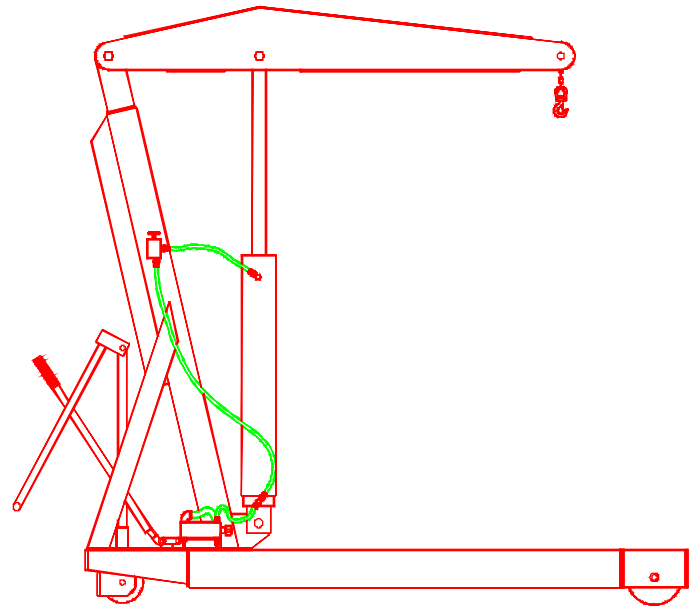
- Meets Ruger's engineering standards of 150% structural overload of maximum rated capacity
- Double-action hydraulic pump for quicker and easier lift
- Built-in hydraulic overload relief valve
(An original Ruger patent)
- Needle type release valve permits pin-point control over lowering and holding of the heaviest or lightest load
- Steel casters with roller bearing wheels
- Swivel hook with safety latch and chain to support heavy loads
- EZ-Steer

Prices, Specifications, and Options are subject to Change Without Notice.

All Ruger products are shipped F.O.B. Streetsboro, Ohio 44241

FAX: 330-656-1601

E-mail: info@davidround.com



The HP-3 is designed for the really big jobs. Tested and exceeds ANSI/ASME PALD standards. Meets ANSI Z.535



David Round, Inc.
 Ruger Division
 10200 Wellman Road
 Streetsboro, OH 44241
 Phone: 330-656-1600
 Fax: 330-656-1601
 www.rugerindustries.com

RELIABLE

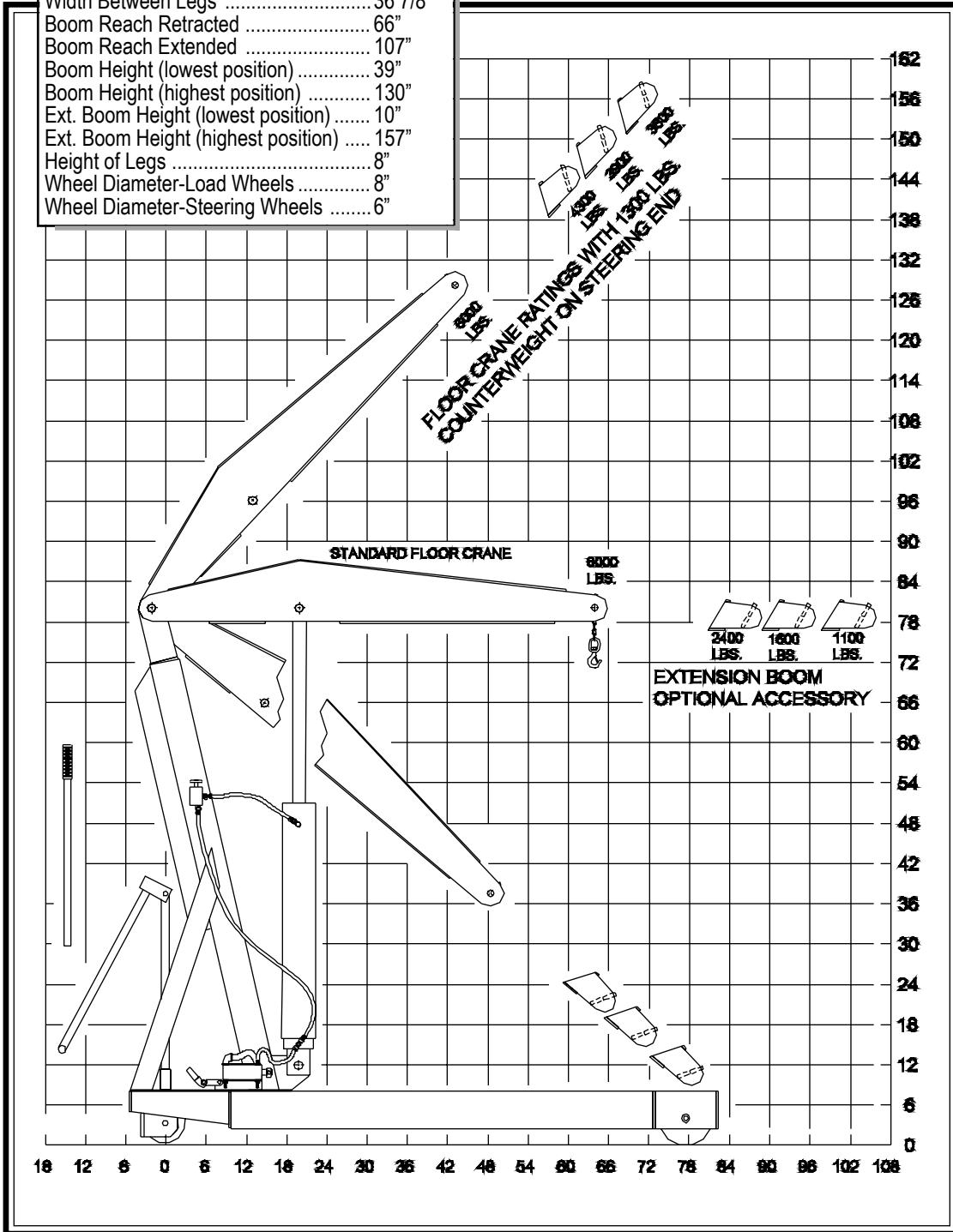
DEPENDABLE

POWERFUL

VERSATILE

MODEL: HP-3

Model	HP-3
Max. Capacity	6000 lbs
Overall Base Length	87 7/8"
Overall Width	48"
Overall Height	82 1/4"
Width Between Legs	36 7/8"
Boom Reach Retracted	66"
Boom Reach Extended	107"
Boom Height (lowest position)	39"
Boom Height (highest position)	130"
Ext. Boom Height (lowest position)	10"
Ext. Boom Height (highest position)	157"
Height of Legs	8"
Wheel Diameter-Load Wheels	8"
Wheel Diameter-Steering Wheels	6"



NOTE:
 Ruger can modify
 any standard
 dimensions
 to meet specific
 customer needs.